

CYSTECTOMIE LAPAROSCOPIQUE SECURITE ONCOLOGIQUE

Th PIECHAUD



CYSTECTOMIE LAPAROSCOPIQUE

- AVANTAGES PATIENT :
 - Chirurgie mini invasive (atraumatique)
 - Pertes sanguines réduites
 - Facilité d'exposition pour lymphadenectomie
 - Qualité de la dissection
 - Simplicité des suites (Douleur ,hospitalisation)

SECURITE ONCOLOGIQUE ?

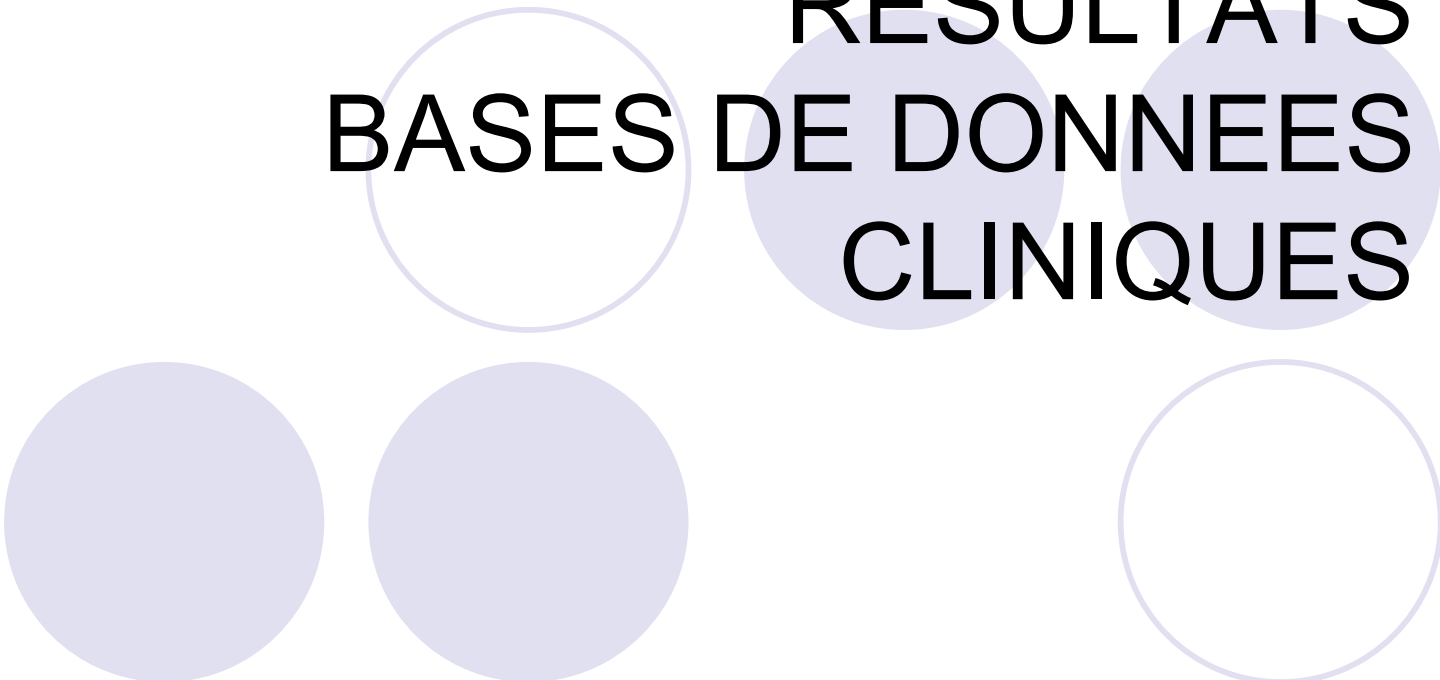
POURQUOI LA QUESTION ?

- Cas de complications inhabituelles
 - Récidives locales précoces
 - Métastases pariétales sur site de trocart
 - Métastases viscérales précoces
- Similitudes avec premières expériences de colectomie laparoscopique pour cancer

SECURITE ONCOLOGIQUE

- POURQUOI UN RISQUE SPECIFIQUE ?
 - Dissection tumorale traumatique :
= effraction tumorale = diffusion tumorale
 - Rôle de l'enceinte gazeuse
 - Effraction voie excrétrice = fuite urinaire
 - Contact tissulaire et péritonéal avec urine tumorale

RESULTATS BASES DE DONNEES CLINIQUES

The slide features several decorative circles. A large, solid light purple circle is positioned behind the text 'RESULTATS'. Another large, solid light purple circle is behind 'BASES DE DONNEES'. A third large, solid light purple circle is behind 'CLINIQUES'. There are also three empty circles with light purple outlines: one to the left of 'BASES DE DONNEES', one below 'BASES DE DONNEES', and one to the right of 'CLINIQUES'.

RESULTATS ONCOLOGIQUES

- TRES PEU DE SERIES CLINIQUES ,
- REcul INSUFFISANT
- ABSENCE D'ANALYSES
COMPARATIVES RANDOMISEES
- Niveau de discordance élevé entre les
études
- Lesur ,Roupret , Prog urol , 2008

INTERNATIONAL REGISTRY

Established : January 2005



INTERNATIONAL REGISTRY

Laparoscopic Radical Cystectomy



International Centers : 15

Cases : 517

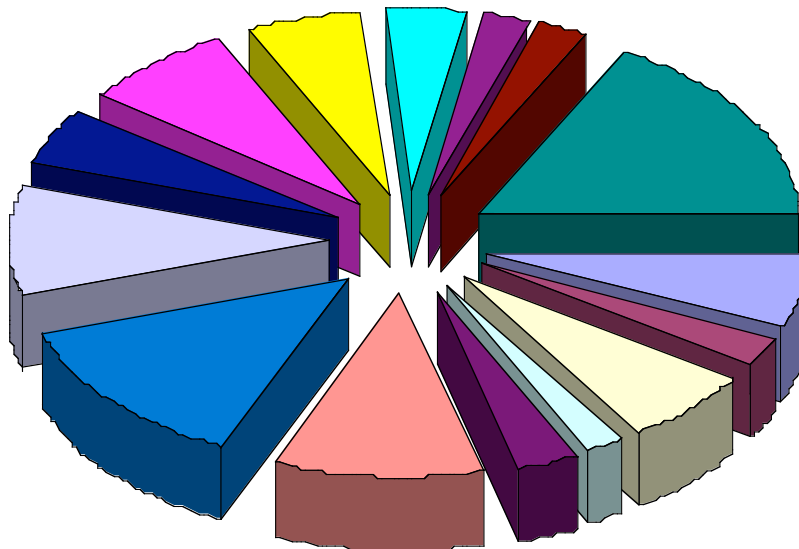
(Dec 1999 – April 2006)

INTERNATIONAL REGISTRY

Laparoscopic Radical Cystectomy



517 cases :



Brussels/Belgium
Nebraska/USA
Cairo/Egypt
Genova/Italy
Creteil/France
Cleveland/USA
Bordeaux/France
California/USA
Gueng Zhou/China
Iquique/Chile
Taipei/Taiwan
Toulouse/France
Eastbourn/UK
Brasilia/Brazil
Paris/France

INTERNATIONAL REGISTRY

Laparoscopic Radical Cystectomy



Baseline Statistics:

Dec 1999 – April 2006

Mean Age (yrs)	: 64.6 (26-88)
Mean BMI	: 25.6 (15-52)
Male/Female	: 83% / 17%

INTERNATIONAL REGISTRY

Laparoscopic Radical Cystectomy



Follow-up

Local Recurrence	: 6%
Systemic Recurrence	: 8%
Port-Site Recurrence	: 0%

Mean follow-up: 17 months [1-72]

INTERNATIONAL REGISTRY

Laparoscopic Radical Cystectomy



Chemotherapy and Radiotherapy

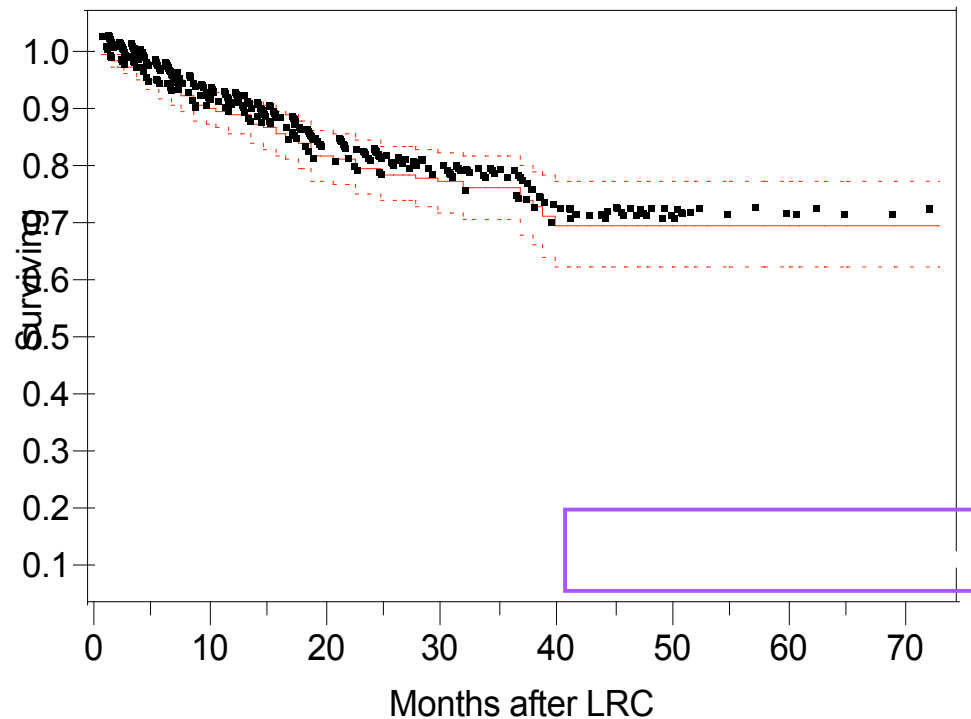
Neo-adjuvant Chemotherapy(n=337)	9	2.6%
Neo-adjuvant Radiotherapy (n=323)	16	4.9%
Adjuvant Chemotherapy (n=96)	76	15%
Number of cycles	4	(1-6)
Adjuvant Radiotherapy (n=378)	10	2.6%

INTERNATIONAL REGISTRY

Laparoscopic Radical Cystectomy



Overall-Survival

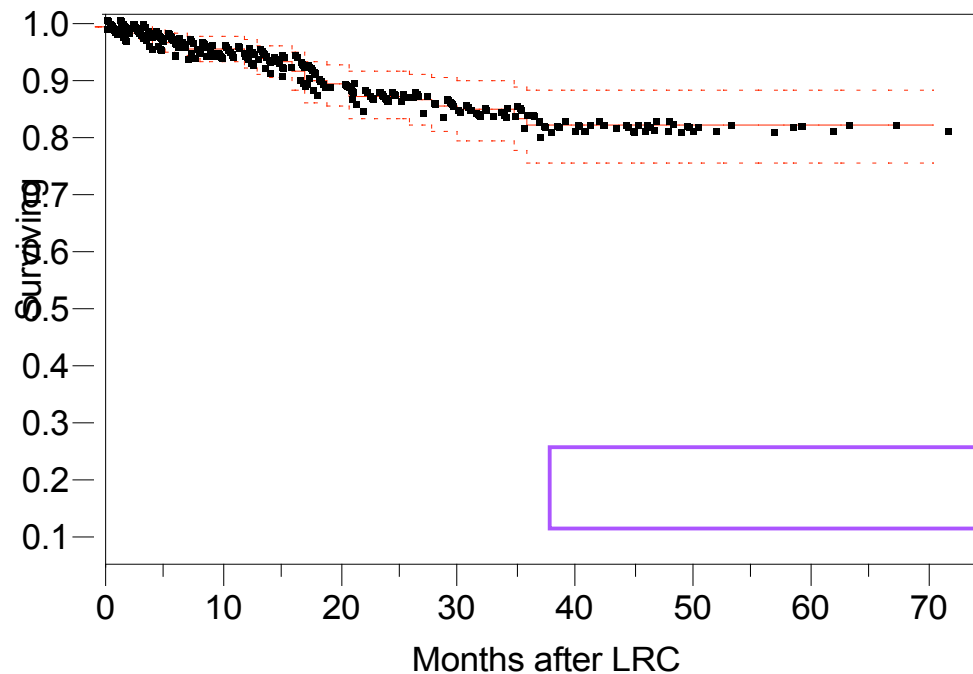


INTERNATIONAL REGISTRY

Laparoscopic Radical Cystectomy



Cancer-specific Survival



Survival After Radical Cystectomy

Stein J Clin Onc, 19:666,2001

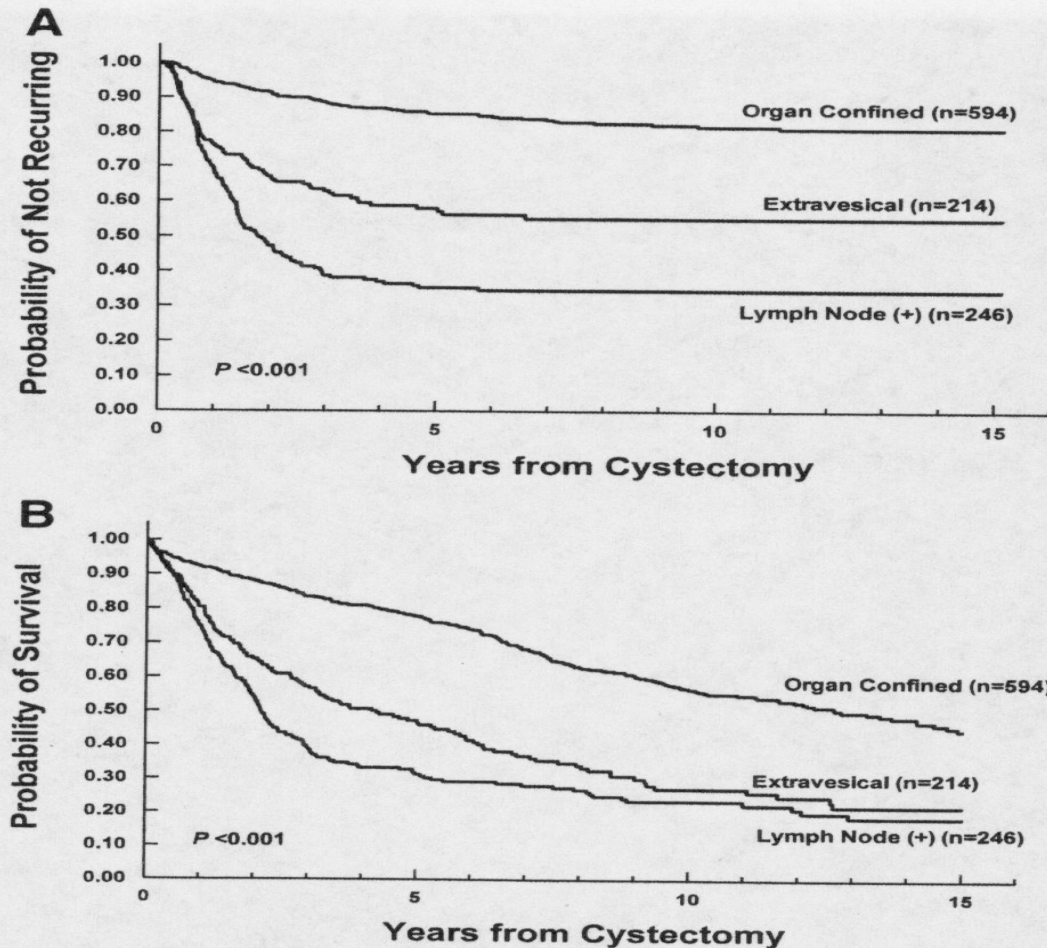


Fig 3. (A) Recurrence-free survival and (B) overall survival in 1,054 patients after radical cystectomy stratified by pathologic subgroups (organ confined, extravesical, and lymph node positive).

N: 1054 patients

Median f/u 10.2 years

Med age: 66 years

positive lymph node rate: 24%

Median time to rec: 12 mons

INTERNATIONAL REGISTRY

Laparoscopic Radical Cystectomy



CONCLUSIONS

1. Lap radical cystectomy being performed more commonly
2. Complication rates appear comparable to open surgery
3. Long-term outcome data pending
4. Recurrence: local (6%), systemic (8%), port-site (0%)
5. International Registry has been set up to co-ordinate advances in this field

CONCLUSIONS

- **CYSTECTOMIE LAPAROSCOPIQUE :
RISQUE ONCOLOGIQUE SPECIFIQUE ?**

- **Spécificité de la tumeur urothéliale .**
- **Fragilité du tissu tumoral**
- **Volatilité de la cellule tumorale urothéliale**
- **Urine : vecteur de diffusion tumoral**

CONCLUSIONS

● PREVENTION DU RISQUE

- SELECTION SERIEUSE DES PATIENTS
- STAGGING TUMORAL PRECIS
T2a , T2b , T3 (?)
- CONVERSION CHIRURGICALE
Absence d'espace libre de dissection
Risque d'effraction tumorale .
- EXSUFLATION TROCARTS EN PLACE
Effet « cheminée »